

ARCOLA BUS SALES

A Div. of Arcola Sales & Service Corp.

51 Kero Road

Carlstadt, N.J. 07072-2601

Tel: (201) 507-8500 Fax: (201) 507-5372

www.ArcolaSales.com

***** **VEHICLE SPEC** *****

Date: 03/01/11

Ref No.: 32995-STK000-HS

CONFIGURED FOR:

Middlesex Regional Ed. Serv. Comm.

VEHICLE TYPE:

New/Used: N D.R.W. 24 Pass Collins Super Bantam
Year: 2012 139"Wb 6.0ltr Gas Eng. 12300 Gvwr 5 Row
Body Manuf: Collins Csx5 Stock Unit
Chassis: Chevrolet

DETAILED DESCRIPTION:

Item	Qn	Fleet Price
STOCK # 32664	1	0.00
ITEM 3A	1	41,380.00
* COMPETITIVE ALLOWANCE	1	0.00
ADDL C/A	1	0.00
CORE CHEV SUPER 5SEC 09	1	0.00
PRICE ADJ LEVEL2 CSX5	1	0.00
CHEV 139 6.0 12.3	1	0.00
GM GOVT PRICE CONCESSION	1	0.00
TILT STEERING	1	310.00
* FREIGHT FROM KS	1	0.00
AC 40K INWALL CARR CHEV CM2	1	0.00
RADIO AM/FM/CD 4SPK CHEV	1	292.00
BUMPER 10" DRW EXH UNDER/SIDE	1	0.00
ENDCAPS SX FGLASS COL WARN LT	1	0.00
RUBRAILS FLOOR LEVEL SX5/GX5	1	0.00
RUBRAILS SEAT LEVEL SX5/GX5	1	0.00
RUBRAILS SKIRT L/H/SX5 AC	1	0.00
MUD FLAPS REAR SX	1	33.00
TOW HOOKS REAR	1	23.00
EXHAUST CHEV X4/X5 UNDR BUMPER	1	0.00
DOOR CONTROL MANUAL, 12 SWITCH MAX S/GX	1	37.00
DOOR ENTR GLASS TEMP H/S/GX	1	0.00
GRABRAIL LH ENTR 42IN BARR MNT	1	0.00
GRABRAIL RH ENTR 30IN	1	0.00
DOOR REAR EGRESS RHHINGE SX/GX	1	0.00
REAR DOOR HINGE 1PC STAINLESS	1	0.00
REAR DOOR LATCH 1PT	1	0.00
VANDAL LOCK REAR DOOR W/BUZZER	1	95.00

Item	Qn	Fleet Price
WNDW REAR DOOR LOWER TEMP CLR	1	0.00
WNDW REAR DOOR UPPER TEMP CLR	1	0.00
CIRCUIT BRKRS IN LIEU OF FUSES	1	117.00
INFO LABEL NJ CHAS MFG/PAS CAP	1	0.00
BATTERY NO BOX CHEV GAS	1	0.00
FLOOR COVER BLK OFFSET S/GX5	1	0.00
STEP TREAD L/H/S RIBBD BLK/WHT	1	0.00
* UNDERCOAT - FULL UNDERBODY N.J.	1	0.00
SUBFLOOR SX5 5/8 PLY MARINE	1	63.00
HEATER 50K FLR MOUNT CHEV	1	0.00
HEATER SHUT OFF VALVE-CABLE OP	1	0.00
INT PANELS LOWER EMB GALV X5	1	0.00
INT PANELS UPPER SX5 SMOOTH	1	0.00
PADDING PKG SX GRY FB	1	0.00
DOME LTS THRU IGNITION	1	0.00
MONITOR 16LT LED WARN LIGHTS	1	162.00
PAINTED BLACK BORDER WARN LT	1	0.00
VISORS 8LT	1	0.00
WARN SYS 8LT MSTR/FT-WARN/CNCL	1	41.00
STROBE LIGHT PRE-WIRE	1	53.00
WARNING LAMPS 8LT HALOGEN SURF	1	0.00
CLEARANCE LIGHTS LED - LOW PROFILE	1	0.00
REVERSE LED WITH REAR DR OPEN	1	0.00
STOP/TAIL 7IN RED	1	0.00
STOP/TAIL/TURN 4IN FLUSH LED	1	0.00
TURN SIGNAL MIDBODY AMB FLUSH	1	0.00
TURN SIGNAL REAR 7IN AMBER	1	0.00
STORAGE COMP LINER SX 22x18x16	1	52.00
MIRROR INTERIOR 6X16 FLAT	1	0.00
MIRRORS, HEAT/RMT REAR & HEAT CROSS - ROSCO CS/CG	1	688.00
PAINT BODY EXT CHEV SX/GX YELL	1	0.00
PAINT ROOF WHITE	1	0.00
PAINT RUBRAILS NJ STYLE BLACK	1	0.00
"BATTERY" 2IN DECAL	1	0.00
LTRG/EMERG DR ARROW RED	1	0.00
EGRESS WINDOW SIGNAGE FMVSS/Y	2	0.00
BARRIER HB LH 45 MED GRAY FB	1	0.00
BARRIER HB RH 30 MED GRAY FB	1	0.00
* BACK-UP ALARM	1	0.00
BODY FLUID KIT #200-902 MULTI	1	60.00
CHILD ALERT CHILD-CHECKMATE	1	237.00
WRECKING BAR 30IN	1	0.00
STOP ARM INCND TS HI-REFL 6000 PLASTIC	1	120.00
HATCH TRAN 1975-004-111 1IN Y	2	0.00
CROSS ARM CHEV SPEC 68600 POLY	1	0.00
HOLDER MAGNET CROSS ARM #8100	1	100.00
ENDCAP "SCHOOL BUS" REFLECTIVE	1	0.00
* INSTALL SEAT TO FLOOR BOLT/NUT	8	0.00
SEAT HB LH 30 ASY MED GRAY FB	1	0.00
SEAT HB LH 45 ASY MED GRAY FB	4	0.00
SEAT HB RH 30 ASY MED GRAY FB	5	0.00
SEAT BELT 60IN BLACK CBC	10	0.00
SEAT BELT 60IN GRAY CBC	10	0.00
SEAT BELT 60IN RED CBC	4	0.00
INSTALL OEM HUB CAPS CHEV	1	0.00
WINDOW SASH TEMP 32% BLACK	1	0.00

Item	Qn	Fleet Price
WNDW EXIT LHVERT TEMP 32% BLK	1	0.00
WNDW EXIT RHVERT TEMP 32% BLK	1	0.00
WNDWS REAR BODY SX/GX TEMP CLR	1	0.00
25% DISCOUNT ON OPTIONS	1	-620.75
Fire Extinguisher 5 lb.	1	0.00
First Aid Kit, Large - 24 Unit	1	0.00
Reflector Triangle Kit	1	0.00
Seat Belt Cutter	1	0.00
Lettering, NJ School - Std	1	0.00
Paint Grill Gray	1	0.00
Pre-Delivery Prep		0.00
Delivery		0.00
NJ School Inspection FEE (pd to State)		0.00
NJ School Inspection - Mech & Lift (plus NJISV)		0.00
** Documentation Charge - Clerical Exp		0.00
** DMV Messenger Charge		0.00
Title, N.J. w/ lien		0.00
Plates, NJ School S1 (>16p) - DMV Fee		0.00

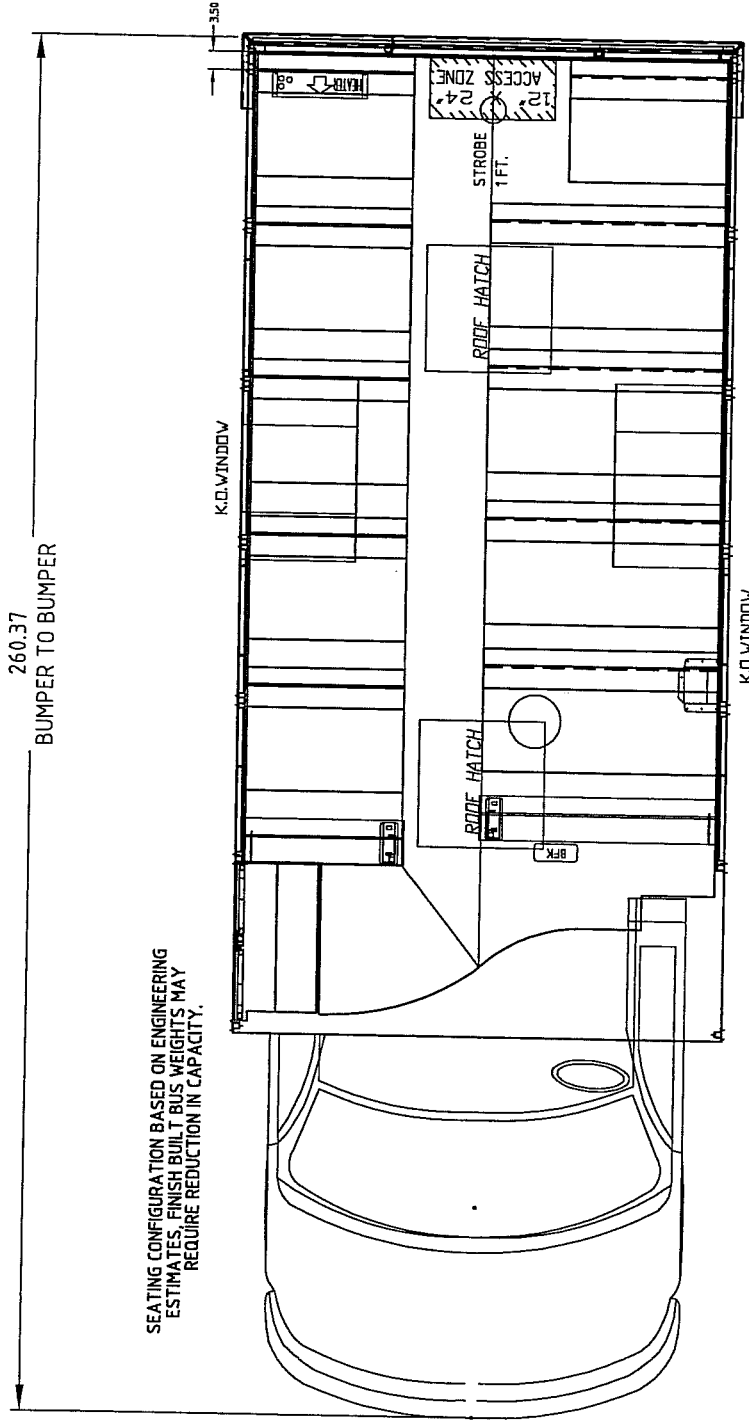
	TOTAL PRICE	\$ 43,242.25
	Additional Discount	0.00

	NET SALES PRICE	43,242.25

PROPOSED BY:


House Account
Sales Consultant

Phone Extension: 0
email: Sales@ArcolaSales.com



CSX5
ARCOLA
24 Passengers
5 30 inch RH Seats at 25 inch Hip to Knee
4 45 inch & 1 30 inch LH Seats at 24 inch Hip to Knee

Approved By: *[Signature]* Date: 1/2/11

 COLLINS BUS CORP. P.O. BOX 2946 HUTCHINSON, KS. 67504-2946 FORM: F-7.3.06 REVISION 0	THIS DRAWING AND ALL INFORMATION THEREON IS THE PROPERTY OF COLLINS IND. INC.		DRAWN BY DEL
	TITLE CHEVY SUPER SB		DATE 01/07/11
DRAWING NO. 48474-78CSX5-13G			