

ARCOLA BUS SALES

A Div. of Arcola Sales & Service Corp.

51 Kero Road

Carlstadt, N.J. 07072-2601

Tel: (201) 507-8500 Fax: (201) 507-5372

www.ArcolaSales.com

***** **BID PROPOSAL** *****

Date: 02 Mar 2011

Ref No.: 32749-MID854-HS

SUBMITTED TO:

*Mr. Patrick Moran Bus. Adm.
Middlesex Regional Ed. Serv. Comm.
1660 Stelton Road
Piscataway, New Jersey 08854*

VEHICLE TYPE:

New/Used: N
Year: 2012
Body Manuf: Collins
Chassis: Chevrolet

Item 1 - Type A, 16 Passenger Bus (S.R.W)
4 Row, 4.8l Gas, 9,900 Gvwr, 139"Wb

DETAILED DESCRIPTION:

Item	Qn
	1
* COMPETITIVE ALLOWANCE	1
CORE CHEV HITOP 4SEC 09	1
PRICE LEVEL2 CHX4	1
CHEVY SRW 139" 9900 4.8G AC/T	1
GM GOVT PRICE CONCESSION	1
* FREIGHT FROM KS	1
AC 40K INWALL CARR CHEV CM2	1
BUMPER 8" SRW EXH UNDER/SIDE	1
ENDCAPS HX FGLASS COL WARN LT	1
RUBRAILS FLOOR LEVEL LX4/HX4	1
RUBRAILS SEAT LEVEL LX4/HX4	1
RUBRAILS SKIRT L/H/SX4 AC	1
* UNDERCOAT - FULL UNDERBODY N.J.	1
EXHAUST CHEV X4/X5 UNDR BUMPER	1
DOOR CONTROL MANUAL, SMALL 5 SWITCH MAX L/HX	1
DOOR ENTR GLASS TEMP H/S/GX	1
GRABRAIL LH ENTR 42IN BARR MNT	1
GRABRAIL RH ENTR 30IN	1
DOOR REAR EGRESS RHHINGE LX/HX	1
REAR DOOR HINGE 1PC STAINLESS	1
REAR DOOR LATCH 1PT	1
WNDW REAR DOOR LOWER TEMP CLR	1
WNDW REAR DOOR UPPER TEMP CLR	1
BATTERY NO BOX CHEV GAS	1
FLOOR COVER BLK CENTER L/HX4	1
STEP TREAD L/H/S RIBBD BLK/WHT	1
SUBFLOOR L/HX4 1/2 PLY	1

Item	Qn
HEATER 50K FLR MOUNT CHEV	1
INT PANELS LOWER EMB GALV X4	1
INT PANELS UPPER HX4 SMOOTH	1
PADDING PKG HX GRY FB	1
DOVE LTS THRU IGNITION	1
MONITOR STOP LIGHT/DSH MOUNTED	1
MONITOR 8LT AEROFLASH	1
PAINTED BLACK BORDER WARN LT	1
VISORS 8LT	1
WARNING SYS 8LT MSTR/WARN/CNCL	1
WARNING LAMPS 8LT HALOGEN SURF	1
CLEARANCE LIGHTS LED - LOW PROFILE	1
REVERSE LED WITH REAR DR OPEN	1
STOP/TAIL 7IN RED	1
STOP/TAIL/TURN 4IN FLUSH LED	1
TURN SIGNAL REAR 7IN AMBER	1
MIRROR INTERIOR 6X16 FLAT	1
MIRRORS, REAR & CROSS - ROSCO CL/CH	1
PAINT BODY EXT CHEV LX/HX YELL	1
PAINT ROOF WHITE	1
PAINT RUBRAILS NJ STYLE BLACK	1
LTRG/EMERG DR ARROW RED	1
EGRESS WINDOW SIGNAGE FMVSS/Y	2
BARRIER HB LH 30 MED GRAY FB	1
BARRIER HB RH 30 MED GRAY FB	1
* BACK-UP ALARM	1
WRECKING BAR 30IN	1
STOP ARM INCND TS REFL 6000	1
HATCH TRAN 1975-004-111 1IN Y	1
CROSS ARM CHEV SPEC 68600 POLY	1
ENDCAP "SCHOOL BUS" REFLECTIVE	1
* INSTALL SEAT TO FLOOR BOLT/NUT	8
SEAT HB LH 30 ASY MED GRAY FB	4
SEAT HB RH 30 ASY MED GRAY FB	4
LATCH POS FMVSS225 CBC NO TETH	2
SEAT BELT 60IN BLACK CBC	8
SEAT BELT 60IN GRAY CBC	8
INSTALL OEM HUB CAPS CHEV	1
WINDOW SASH TEMP 32% BLACK	8
WNDW EXIT LHVERT TEMP 32% BLK	1
WNDW EXIT RHVERT TEMP 32% BLK	1
WNDWS REAR BODY SX/GX TEMP CLR	1
FIRE EXT 5LB 10ABC FRONT MNT	1
FIRST AID KIT #202-126 NJ	1
TRIANGLE WARNING REFLECTORS 3	1
SEAT BELT CUTTER	1
LETTERBELT 5IN DECAL	1
NUMBER BELT 5IN DECAL	1
"BATTERY" 2IN DECAL	1
PAINT CHASSIS GRILL GRAY	1

Pre-Delivery Prep

Delivery

NJ School Inspection FEE (pd to State)

NJ School Inspection - Mech & Lift (plus NJISV)

** Documentation Charge - Clerical Exp
** DMV Messenger Charge
Title, N.J. (no lien)
Plates, NJ School S2 (<17p) - DMV Fee

PRICE PER VEHICLE: \$ 37,630.00

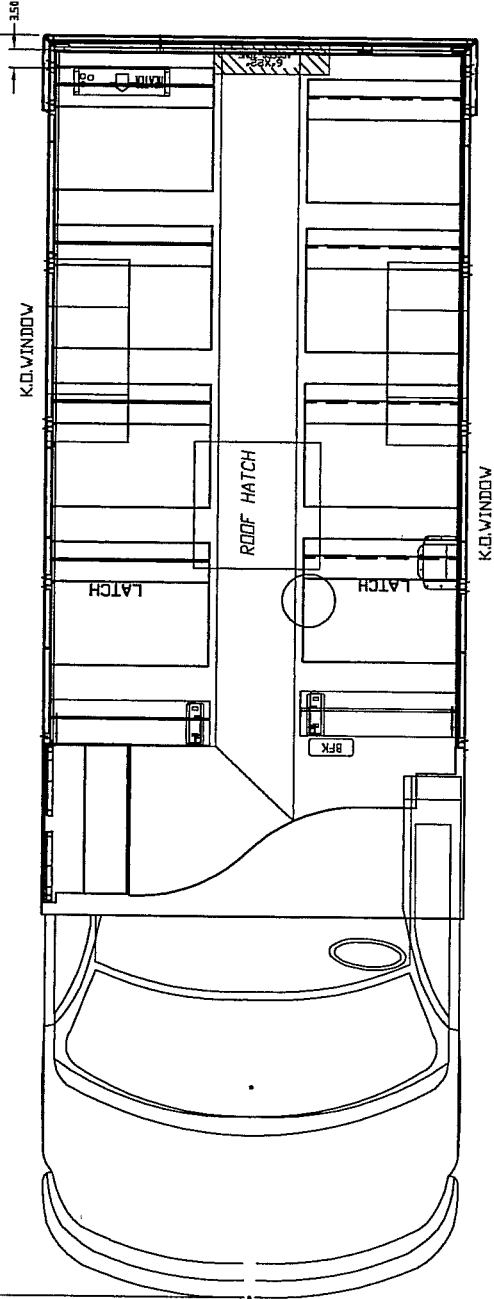
PROPOSED BY:

House Account
Account Manager

Phone Extension: 0
email: Sales@ArcolaSales.com

238.37
BUMPER TO BUMPER

SEATING CONFIGURATION BASED ON ENGINEERING
ESTIMATES. FINISH BUILT BUS WEIGHTS MAY
REQUIRE REDUCTION IN CAPACITY.



CHX4

ARCOLA

16 Passengers

4 30 inch RH Seats at 26 inch Hip to Knee

4 30 inch LH Seats at 25 inch Hip to Knee

Approved By: *AK* Date: *1/17/11*



COLLINS BUS CORP.
P.O. BOX 2946
HUTCHINSON, KS.
67504-2946
FORM: F-7.3.06 REVISION 0

THIS DRAWING AND ALL
INFORMATION THEREON
IS THE PROPERTY OF
COLLINS IND. INC.

DRAWN
BY
DEL

DATE
01/06/11

TITLE CHEVY HIGH TOP SB

DRAWING
NO. 48540-43CHX4-9G